

Illustration - Type - E

3 600 HB8 900  
Issue | 23-10-19  
Stand | Fig./Abb. 2

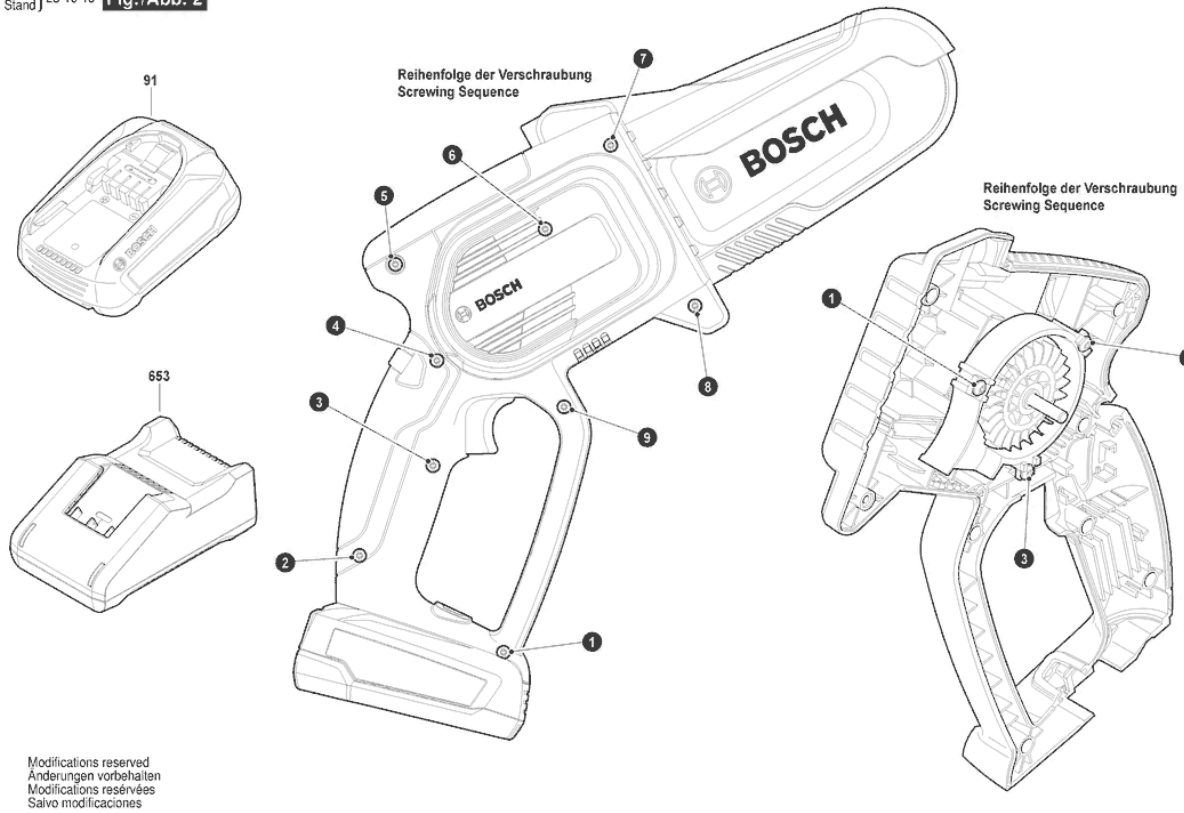
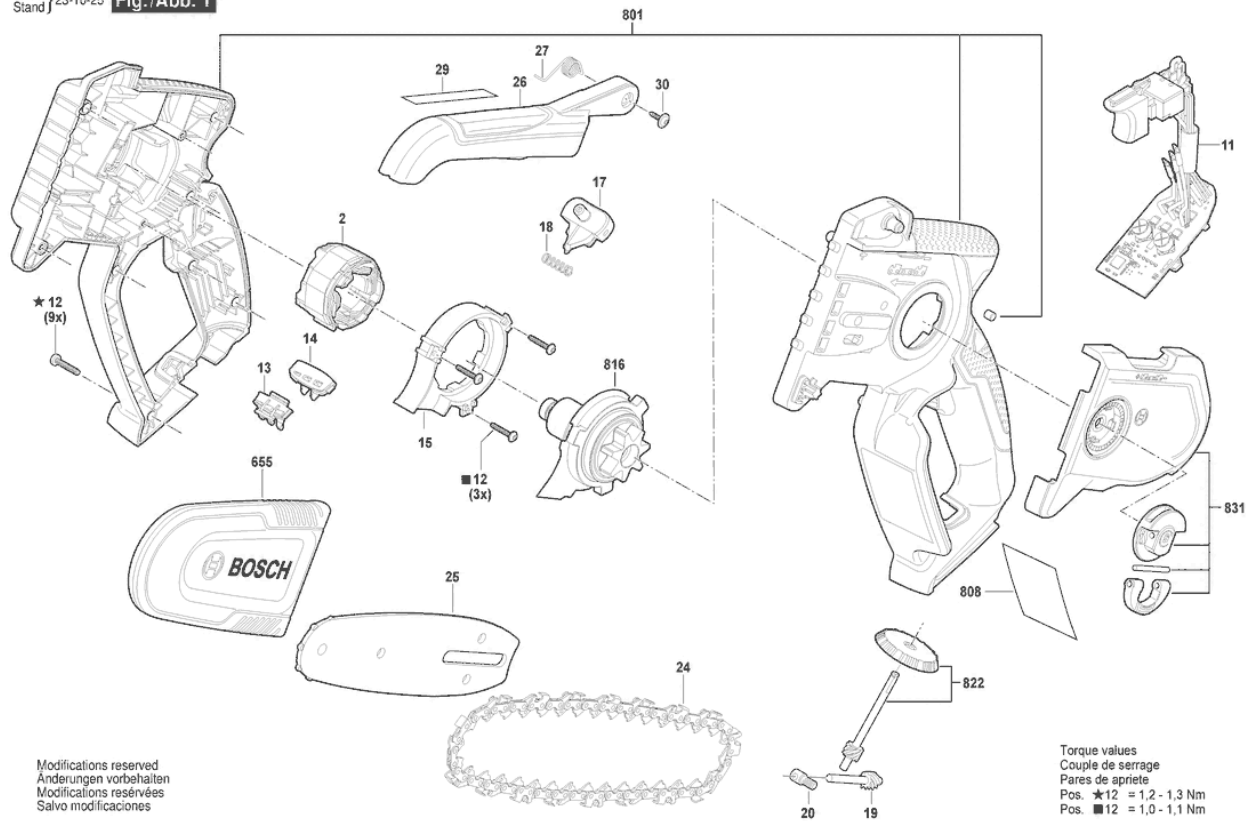


Illustration - Type - E

3 600 HB8 900  
 Issue | 23-10-25  
 Stand | Fig./Abb. 1



## Spare parts list

Item	Part Number	Description
2	1 619 P17 817	Stator
11	1 600 A02 D4P	Printed-Board Assembly
12	2 603 490 017	Torx Oval-Head Screw 3X10
13	1 600 A01 226	Light Conductor
14	1 605 500 2DE	Cover
15	1 600 A02 GS4	Air Guide Plate
17	1 600 A00 MJ2	Release Lever
18	1 600 A03 0BT	Spring
19	1 600 A02 H3D	Drive Shaft
20	1 600 A02 E2G	Pin
24	1 600 A02 CP6	Chain
25	1 600 A02 BF4	Guide Rail
26	1 600 A02 BU3	Chain Guard
27	1 600 A02 E7R	Spring
29	1 600 A02 R6S	Warning Label
30	1 600 A00 RD6	Special Screw
655	1 600 A02 E7Y	Chain Guard
801	1 607 000 F3E	Housing Assembly
808	1 601 11A A6W	Nameplate
816	1 600 A03 1PH	Drive Unit
822	1 607 000 F3G	Tensioning device
831	1 607 000 F3H	Cover unit
91	1 607 A35 0RU	Battery Pack
91	1 607 A35 1C9	Battery Pack
653	2 607 226 517	Charger
653	2 607 226 519	Charger
653	2 607 226 593	Charger